

How-To

How To Generate a Species of Greatest Conservation Need List in HabiMap™ Arizona

STEPS:

1. **URL:** Direct browser to: <http://habimap.org/> (Fig 1, Step 1) → Click the image OR the link “HabiMap™ Arizona” → Read and agree to the Disclaimer.
2. **OPEN THE SGCN QUERY TOOL:** Click on the “SGCN Query” button in the “Tools” toolbar at the top of the screen.
3. **GENERATE THE TABLE:** The point query tool is active when the SGCN Query Tool is first opened. To generate a SGCN list, zoom to an area of interest and click on the map. This will generate a list of SGCN species that could potentially be in the highlighted grids.
4. **SAVE THE QUERY LIST:** Once the table is generated, it can be saved as a .csv or a text file. Click ‘Export’ at the bottom of the table and save it in a format you prefer.

TIPS:

5. **USE WITH ‘DRAW PROJECT’ TOOL:** Open the “Draw Projects” tool in the “Tools” toolbar at the top of the screen. Create a project or open a saved project. Once the desired project(s) are loaded, open the “SGCN Query” Tool. Click on the ‘pen’ button in the ‘SGCN Query’ to generate a SGCN list for the project(s). Use the instructions from Step 4 to save the query list.

Step 1

Figure 1

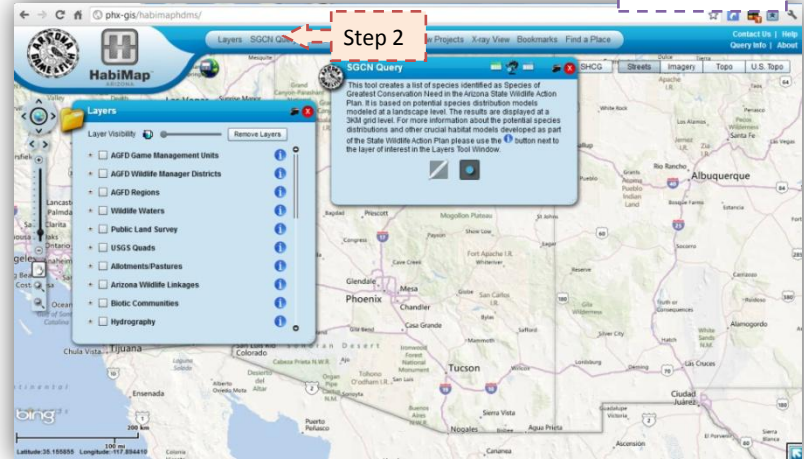


Figure 2

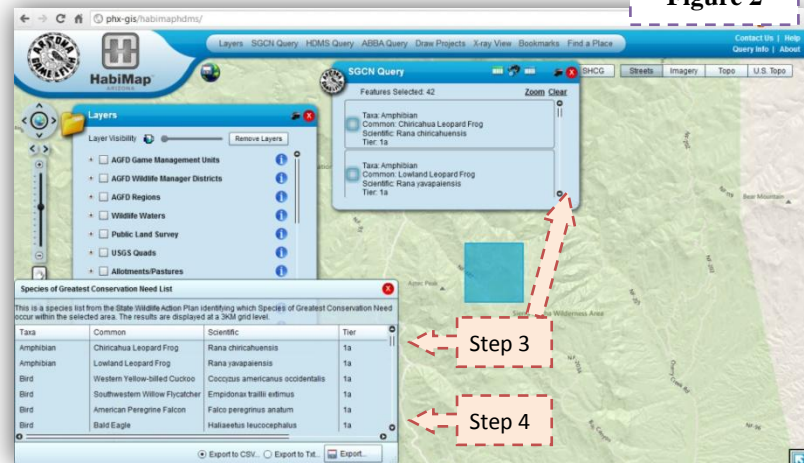


Figure 3

